

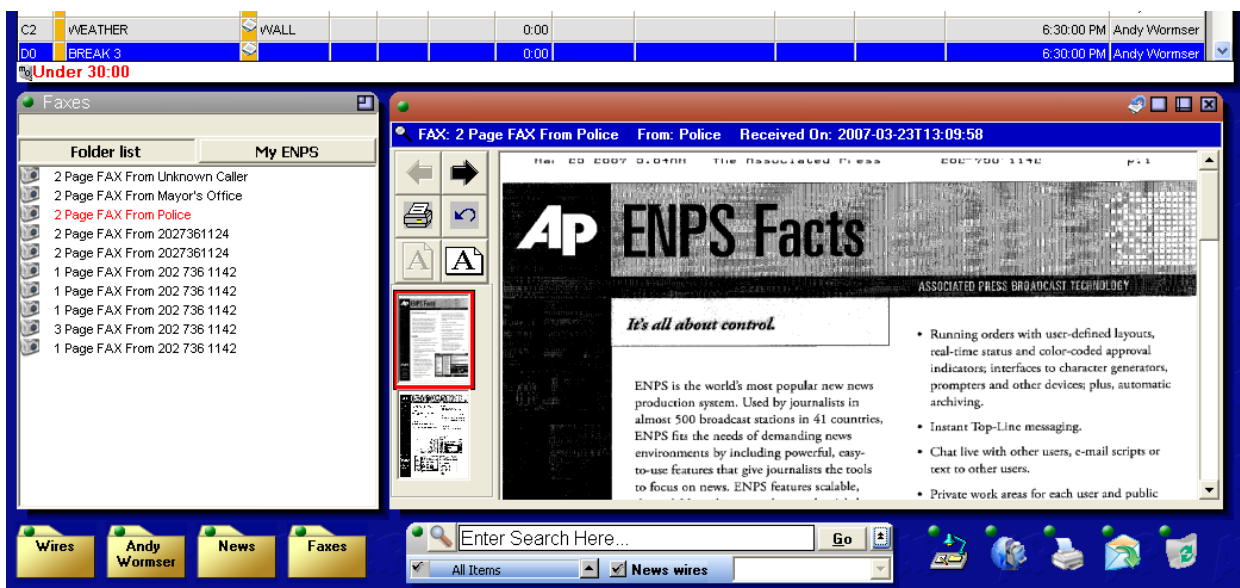
ENPS FAX

BEFORE ENPS FAX

1. Critical information is faxed to newsroom.
2. Fax is taken to copy machine and duplicated.
3. Fax distributed to key members of newsroom.
4. Because the crew left hours before fax arrived, fax contents are relayed over the phone, increasing the risk of incorrect information.
5. Cross fingers.

AFTER ENPS FAX

1. Critical information is faxed to newsroom.
2. Fax is automatically ingested into ENPS.
3. Reporter in the field launches ENPS, views fax, and immediately has critical information.
4. There is no Step 4. You're done.



Essentials

- > Never lose faxes again!
- > ENPS FAX takes faxes and automatically places them directly into ENPS, so journalists can view the information from the ENPS desktop.
- > Faxes can be linked to ENPS assignments, keeping all the important information about an assignment in one spot.
- > Fully integrated with ENPS.
- > Faxes can be viewed from any ENPS workstation.
- > Faxes can be automatically converted to text documents, allowing full search capabilities
- > Faxes can be dragged, dropped, moved, or sent between users or groups.
- > All incoming faxes can be placed in a single ENPS folder, reducing confusion and clutter.
- > ENPS FAX administration enables automatic purging of faxes and management of 'junk sender' list.
- > ENPS FAX is a server-based utility built from secure and reliable off-the-shelf tools.
- > Faxes are also ingested in plain text, allowing for direct drag-and-drop into ENPS stories and planning items.